

REVISION HISTORY

DEVICE ORDER INFORMATION

3 \$ 5 7 1 8 0 % (5	3 \$ & . \$ * (0 \$ 5 . , 1 *	3 \$ & . \$ * (' , 6 & 5 , 3 7 , 2

1)

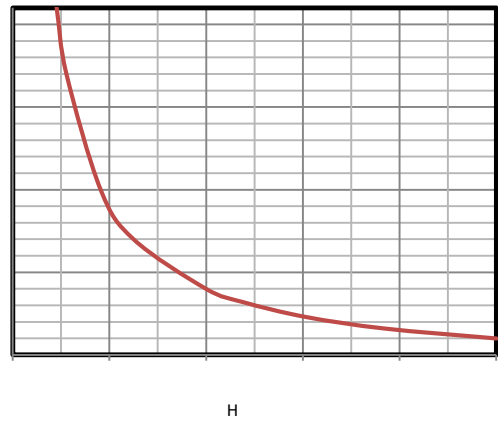
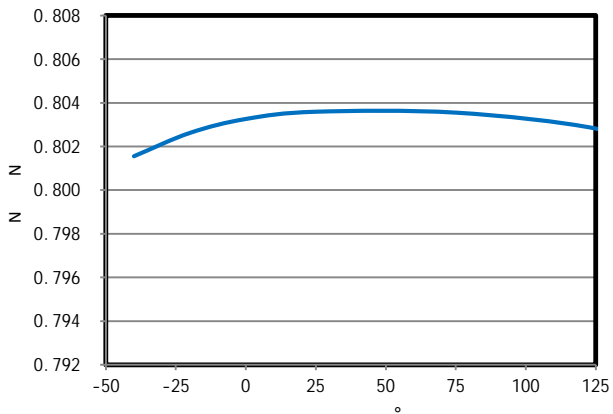
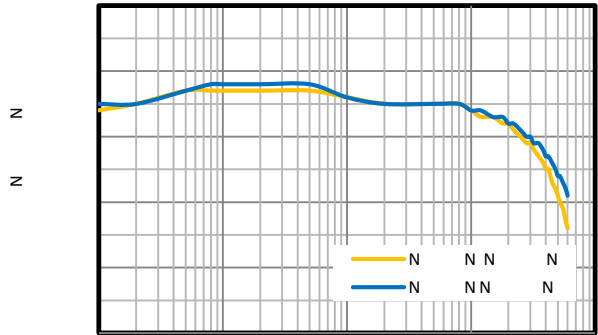
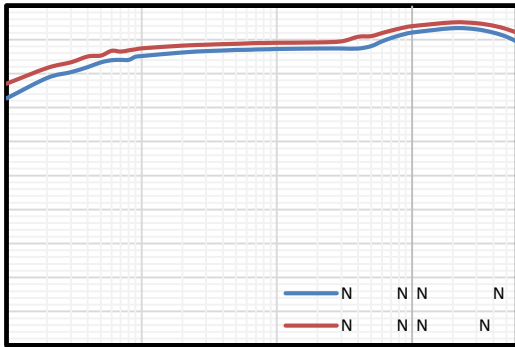
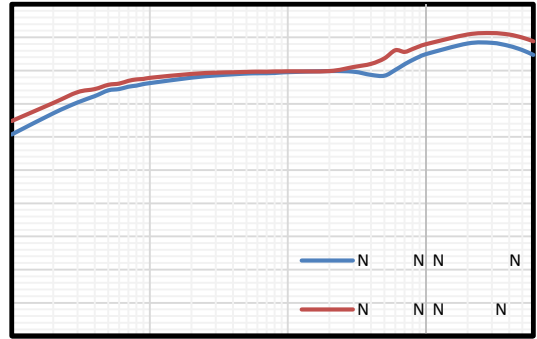
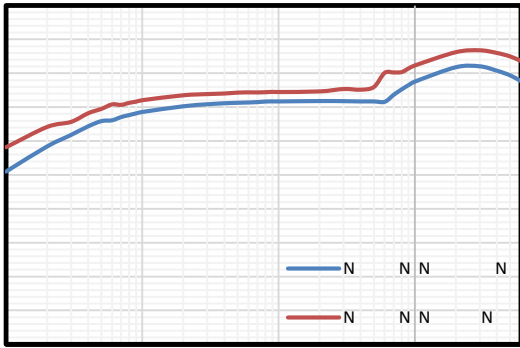
ABSOLUTE MAXIMUM RATINGS

ELECTRICAL CHARACTERISTICS

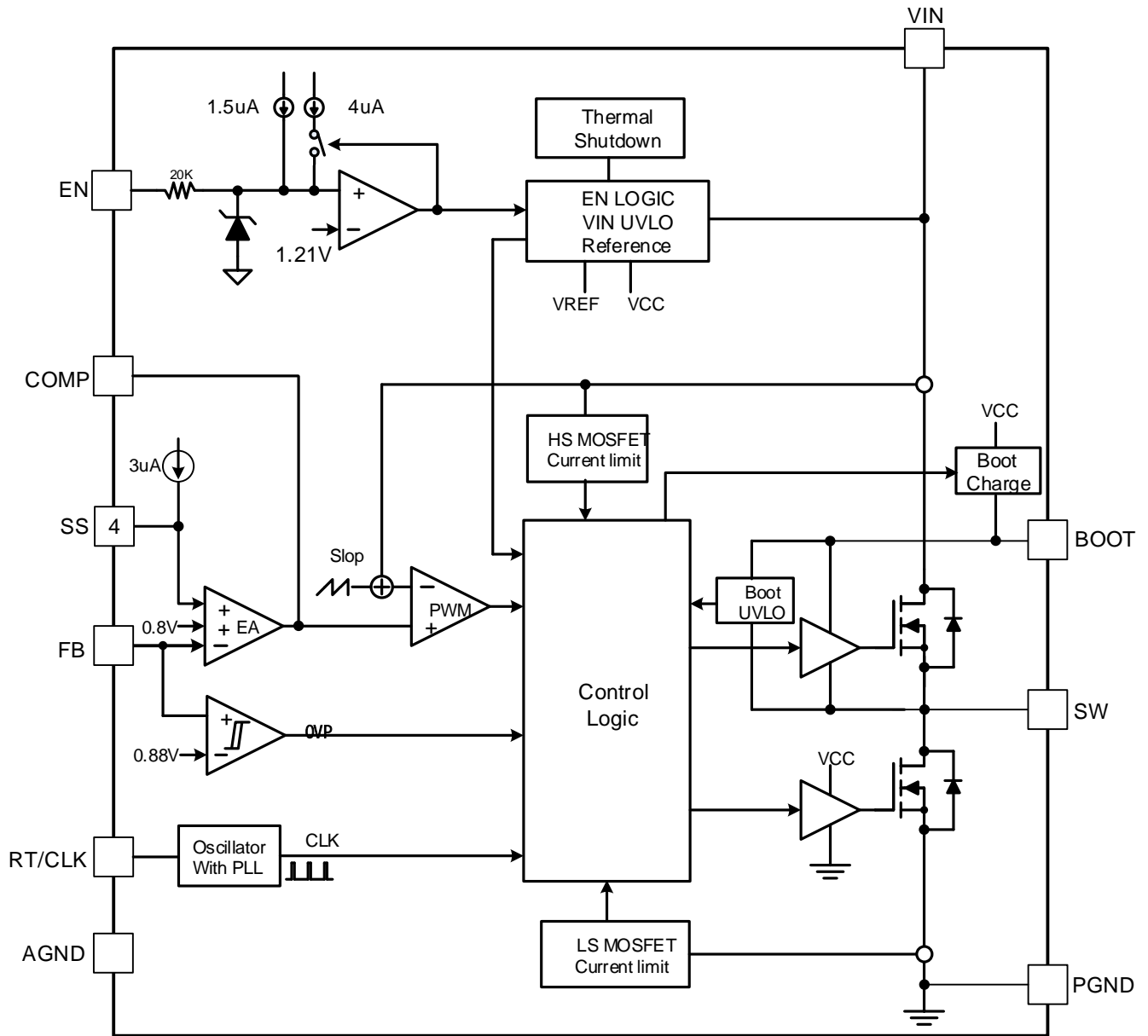
6 < 0 %	3 \$ 5 \$ 0 (7 (5	7 (6 7 & 2 1 ' , 7 , 2 1	0 , 1 7 < 3 0 \$;	8 1 ,
3 R Z H U 6 X S S O \				
3 R Z H U 0 2 6) (7 V				
5 H I H U H Q F H D Q G & R Q W U R O / R R S				
& X U U H Q W D Q G P 2 Y H U & X U U H Q W 3 U R W H F W L R Q				
(Q D E O H D Q G 6 R I W 6 W D U W X S				
6 Z L W F X U H Q T X H Q F (\ W H Q G D G \ Q R E R Q L] D W L R Q				
3 U R W H F W L R Q				

6 < 0 %	3 \$ 5 \$ 0 (7 (5	7 (6 7 & 2 1 ' , 7 , 2 1	0 , 1 7 < 3 0 \$;	8 1 ,

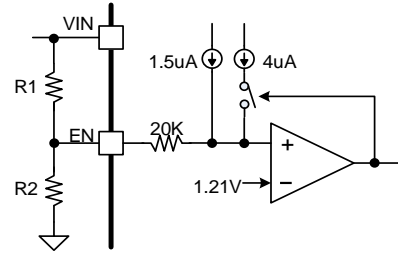
TYPICAL CHARACTERISTICS



FUNCTIONAL BLOCK DIAGRAM



6 & 7



•
•

2 X W S X W 9 R O W D J H

±1% tolerance

•
•

3 U R J U D P P D E 6 O V H D 6 R V I W

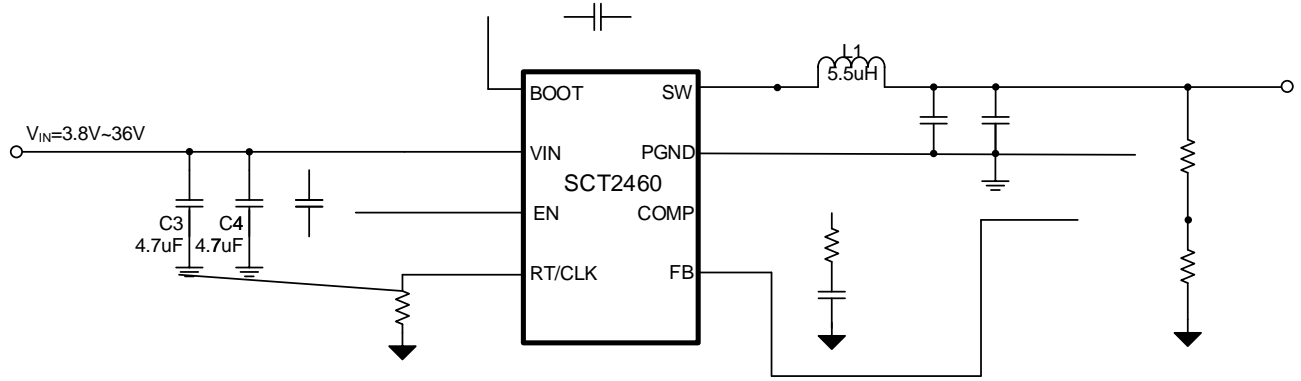
•
•

6 Z L W F X U 1 0 T X H Q F \ D Q G & O R F N 6 \ Q F K U R Q L] D W L R Q

2 Y H&X U U WLOPVL W +D FQFGX R G H

APPLICATION INFORMATION

7 \ S L F D O \$ S S O L F D W L R Q



) L J X U H 6 & 7 ' H V L J Q ([D P S O H 9 2 X W S X W Z L W K 3 U R J U E

' H V L B O U D P H W H U V

' H V L J Q 3 D U D P H W H U V	([D P S O H 9 D O X H

2 X W S X W 9 R O W D J H

9 ₂ 8 7	5	5

6 Z L W F K L Q J) U H T X H Q F \

) V Z	5 5 ₆ :

-
-
-
-
-

-
-
-
-
-
-

-
-
-
-

, SXW & DSDFLWRU 6HOHFWLRQ

%RRWVWUDS & DSDFLWRU 6

2XWSXW & DSDFLWRU 6HOHFWLRQ

•

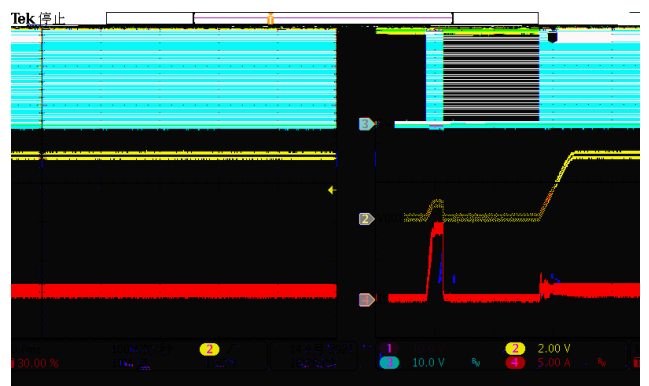
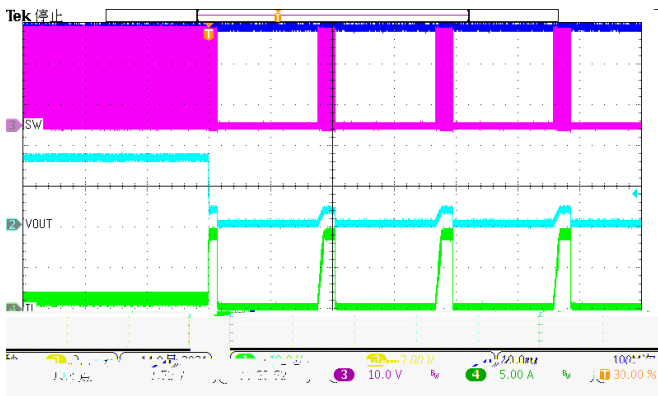
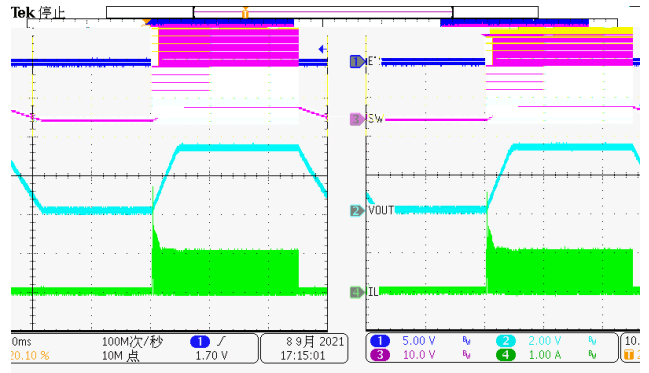
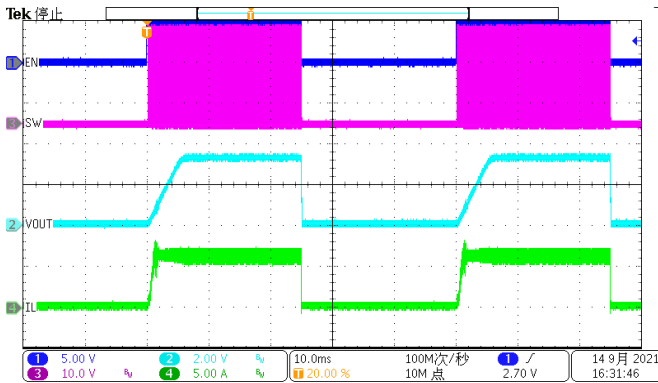
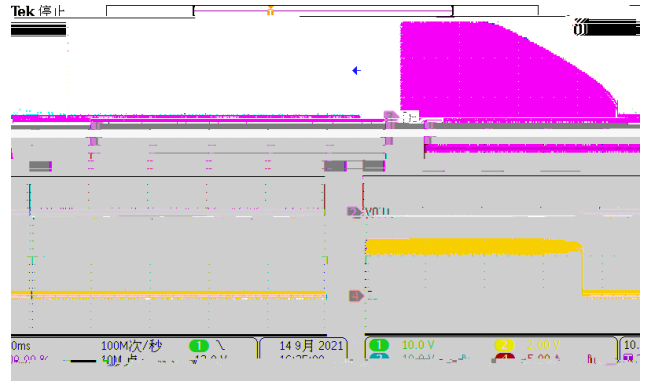
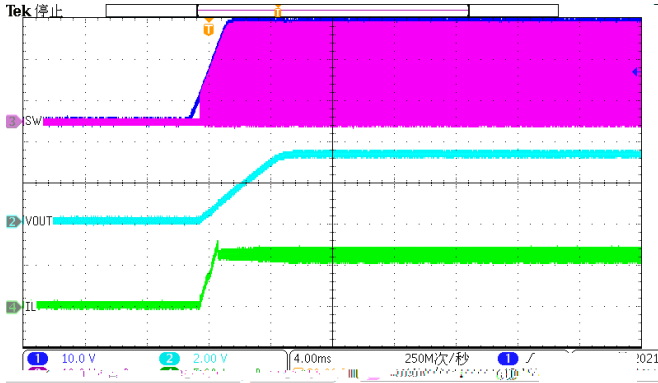
____ _

____ _

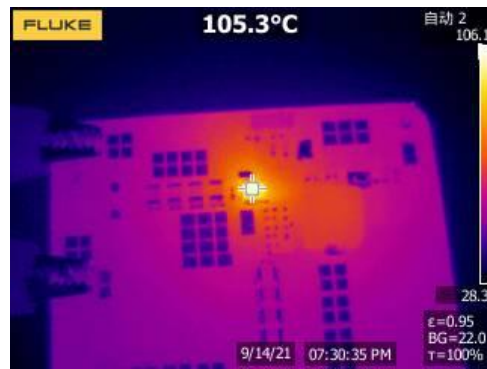
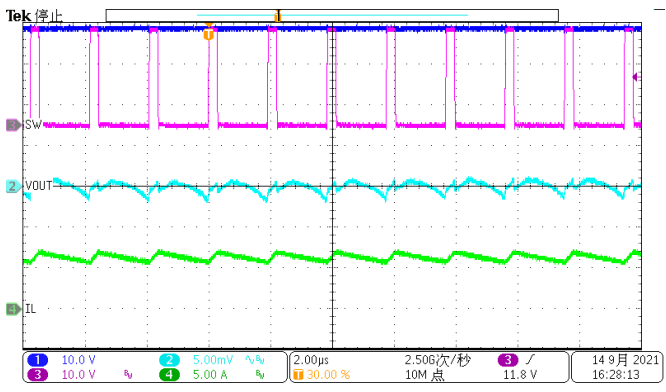
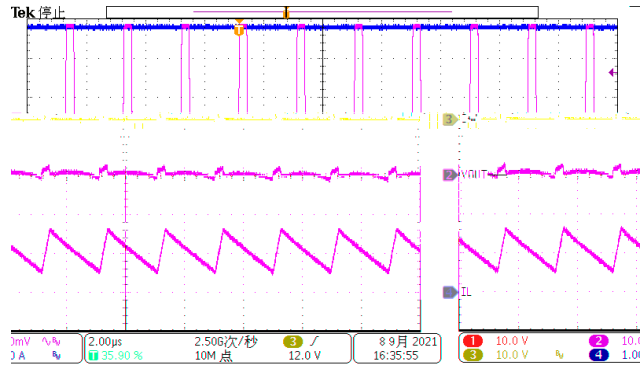
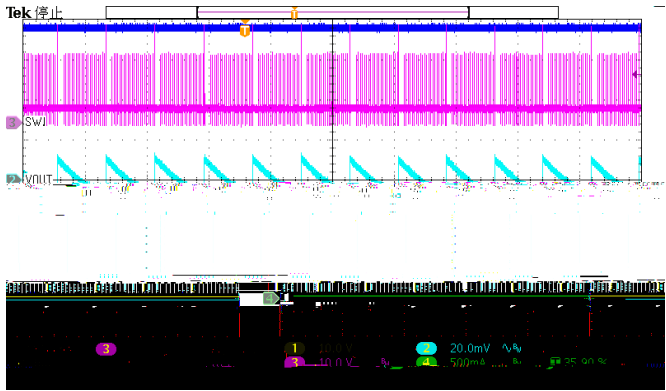
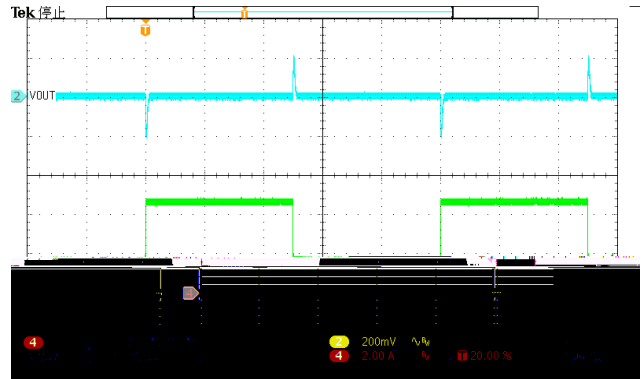
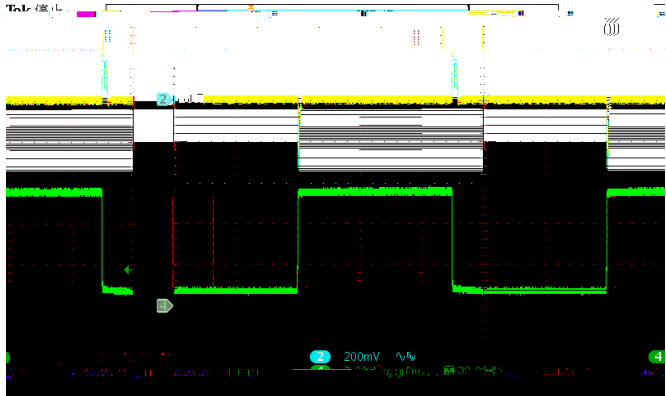
7 D E O ~~R~~ P S H Q V D W L R Q \ S L ~~O~~ ~~D~~ V 2 X R W S X W 9 R O W D J H ~~D~~ ~~W~~ ~~D~~ F L W . R . U & R P

N			H		
N					
N					
N					
N					
N					

\$ S S O L F : D W H R Q U P V

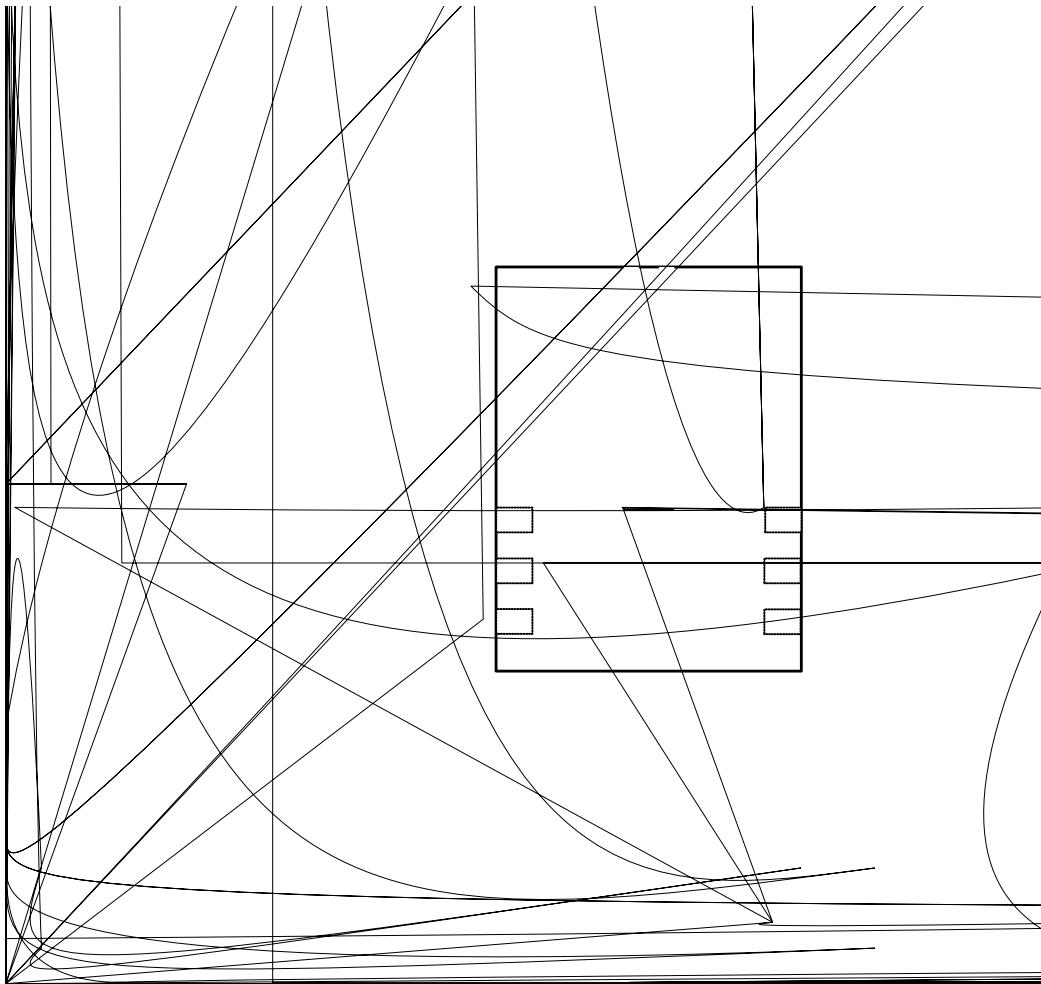


\$ S S O L F : D W H R Q U P V & R Q W L O X H G

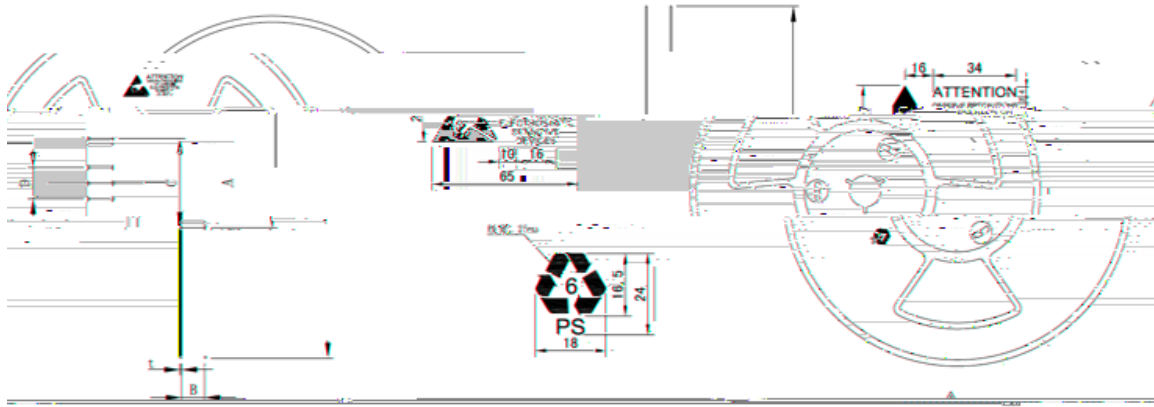


/D \ R X \ M L G H O L Q H

- 1.
- 2.
- 3.
- 4.
- 5.
- 6.
- 7.
- 8.



TAPE AND REEL INFORMATION



SECTION A-A

SCALE: 1 : 1

